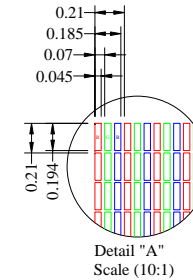
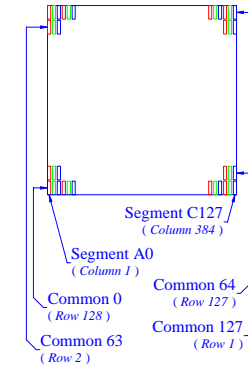
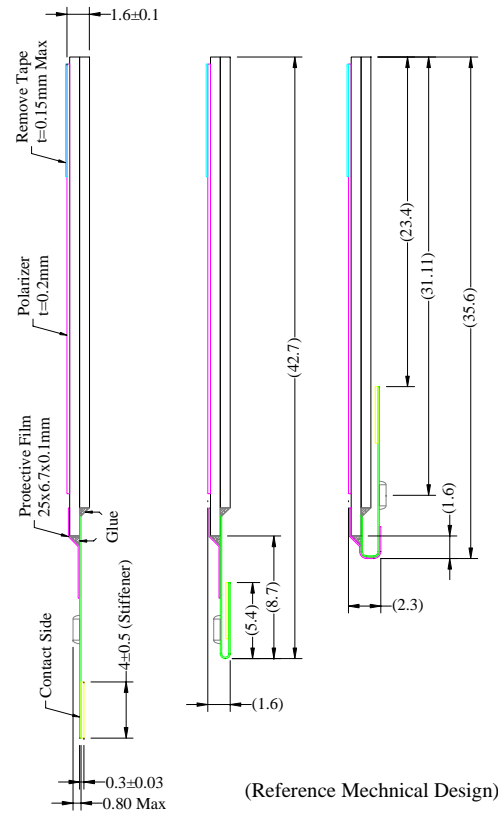
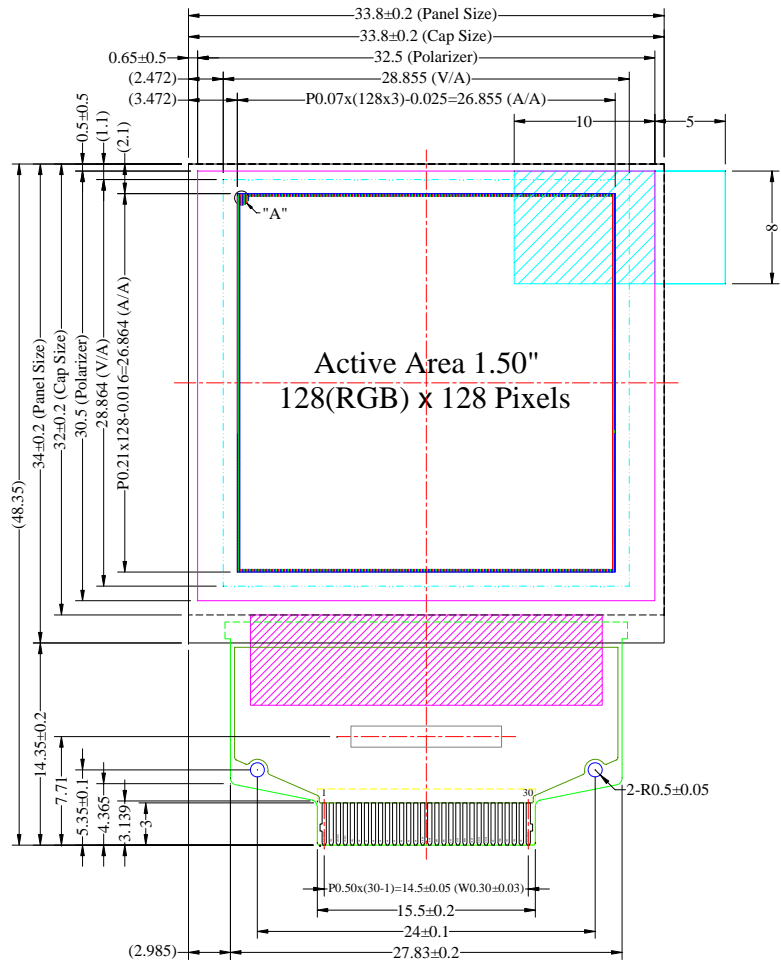


The drawing contained herein is the exclusive property of Univision. It is not allowed to copy, reproduce and or disclose in any formats without permission of Univision.

Item	Date	Remark
A	20080815	Original Drawing



Pin	Symbol
1	N.C. (GND)
2	VCC
3	VCOMH
4	VDDIO
5	VSL
6	N.C.
7	D7
8	D6
9	D5
10	D4
11	D3
12	D2
13	D1
14	D0
15	E/RD#
16	R/W#
17	BS0
18	BS1
19	CS#
20	D/C#
21	RES#
22	IREF
23	GPIO1
24	GPIO0
25	N.C.
26	VDD
27	VCI
28	VSS
29	N.C.
30	N.C. (GND)

Notes:

1. Driver IC: SSD1351
2. Die Size: 10700um x 1500um
3. COF Number: SSD1351U3
4. Interface: 8-bits 68XX/80XX Parallel, 3-/4-wire SPI
5. General Tolerance: ±0.30
6. The total thickness (1.70 Max) is without polarizer protective film & remove tape. The actual assembled total thickness with above materials should be 1.95 Max.

Customer Approval Signature		Univision Technology Inc.						Drawing Number		Rev.			
								DFE2828CNCNF38		A			
		UG-2828GDEDF11 Folding Type OEL Display Module Pixel Number: 128(RGB) x 128, 262144 Colors, COF Package						Material					
								Soda Lime / Polyimide					
		Unless Otherwise Specified		Title		Drawn		E.E.		Panel / E.		P.M.	
		Unit mm				Humphrey Lin		Sean Lai		Ivy Lo		Cherry Lin	
		General Roughness				By		Date		Scale		Sheet	
		Tolerance				Date		20080815		20080815		20080815	
		Dimension ±0.3				Date		20080815		20080815		20080815	
		Angle ±1				Date		20080815		20080815		20080815	
						Scale		1:1		Sheet		1 of 1	
										Size		A3	