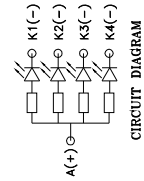
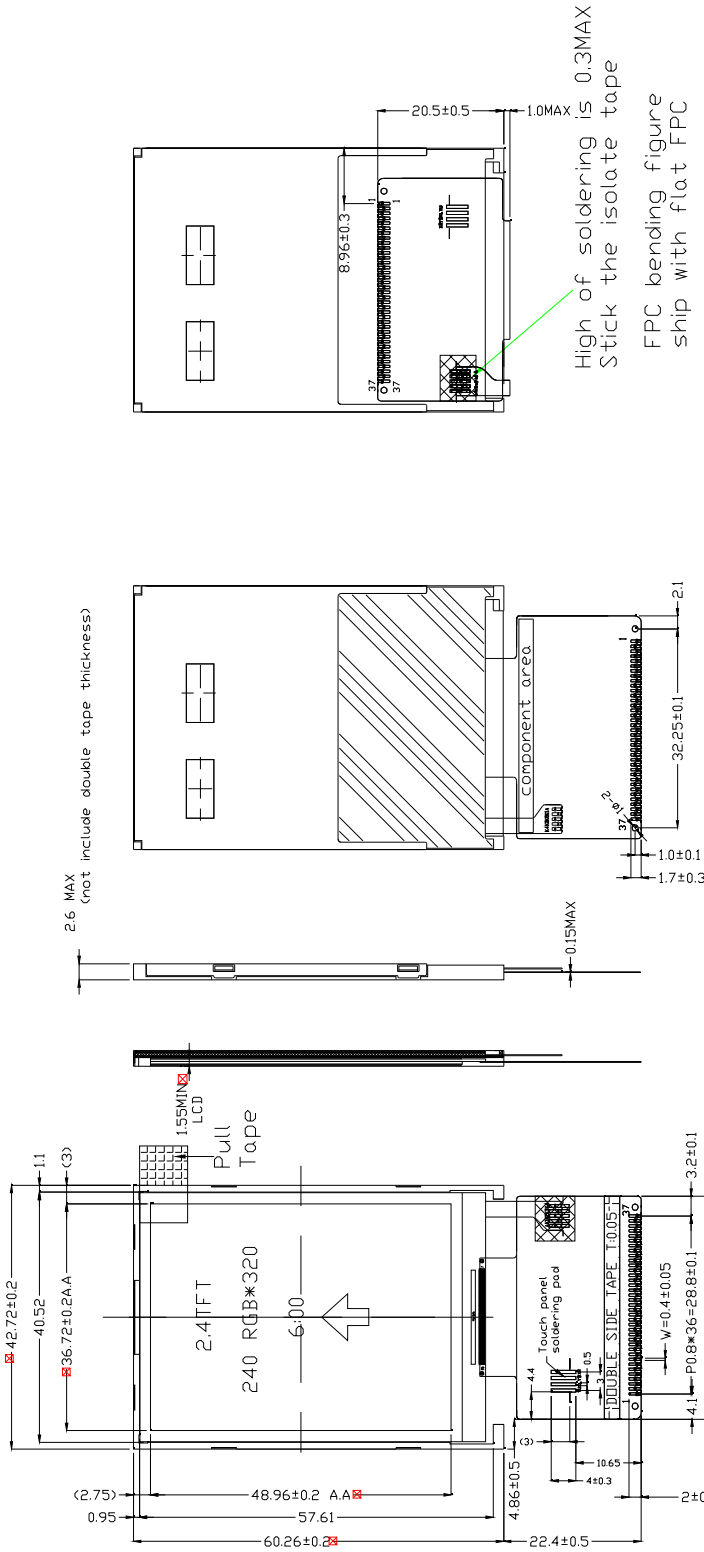


# 15. Assembly Drawing

Explanation :  
 1.TP A/A area(display touch pattern), customer's open window should be 0.3~0.5mm larger of each side.  
 2.TP V/A area, customer's adhesive sponge or double tape should be 0.6~1.0mm larger than each side

PIN SYMBOL	PIN DEFINITION
1	NC
2	VDD
3	VDD
4	CS
5	RS
6	WR
7	RD
8	REST
9	DB0
10	DB1
11	DB2
12	DB3
13	DB4
14	DB5
15	DB6
16	DB7
17	DB8
18	DB9
19	DB10
20	DB11
21	DB12
22	DB13
23	DB14
24	DB15
25	NC
26	TD
27	XR
28	VU
29	XL
30	LEDA
31	LEBK1
32	LEBK2
33	LEBK3
34	LEBK4
35	GND
36	GND
37	NC



UNIT: MM	TOLERANCE:
3RD ANGLE	XX = ± 0.2
	XXX = ± 0.2
	ANG = ± 0.5

- NOTE:
- 1.DISPLAY TYPE:2.4" TFT, TRANSMISSIVE
  - 2.DRIVER IC: ILI9341
  - 3.VIEWING DIRECTION: 6 O'CLOCK
  - 4.OPERATING TEMPERATURE:-20°C--+70°C.
  - 5.STORAGE TEMPERATURE:-30°C--+80°C.
  - 6.BACKLIGHT TYPE:4 WHITE LEDS.(Nichia LED NSSW206T RANK : BJJ/A62)
  - 7.LED:If=15.0mA/LED (CONSTANT CURRENT).
  - 8.(...) REFERENCE DIMENSION.
  - 9.\* ICON MEAN CRITICAL DIM
  - 10.MUST MEET THE REQUIREMENT OF ROHS