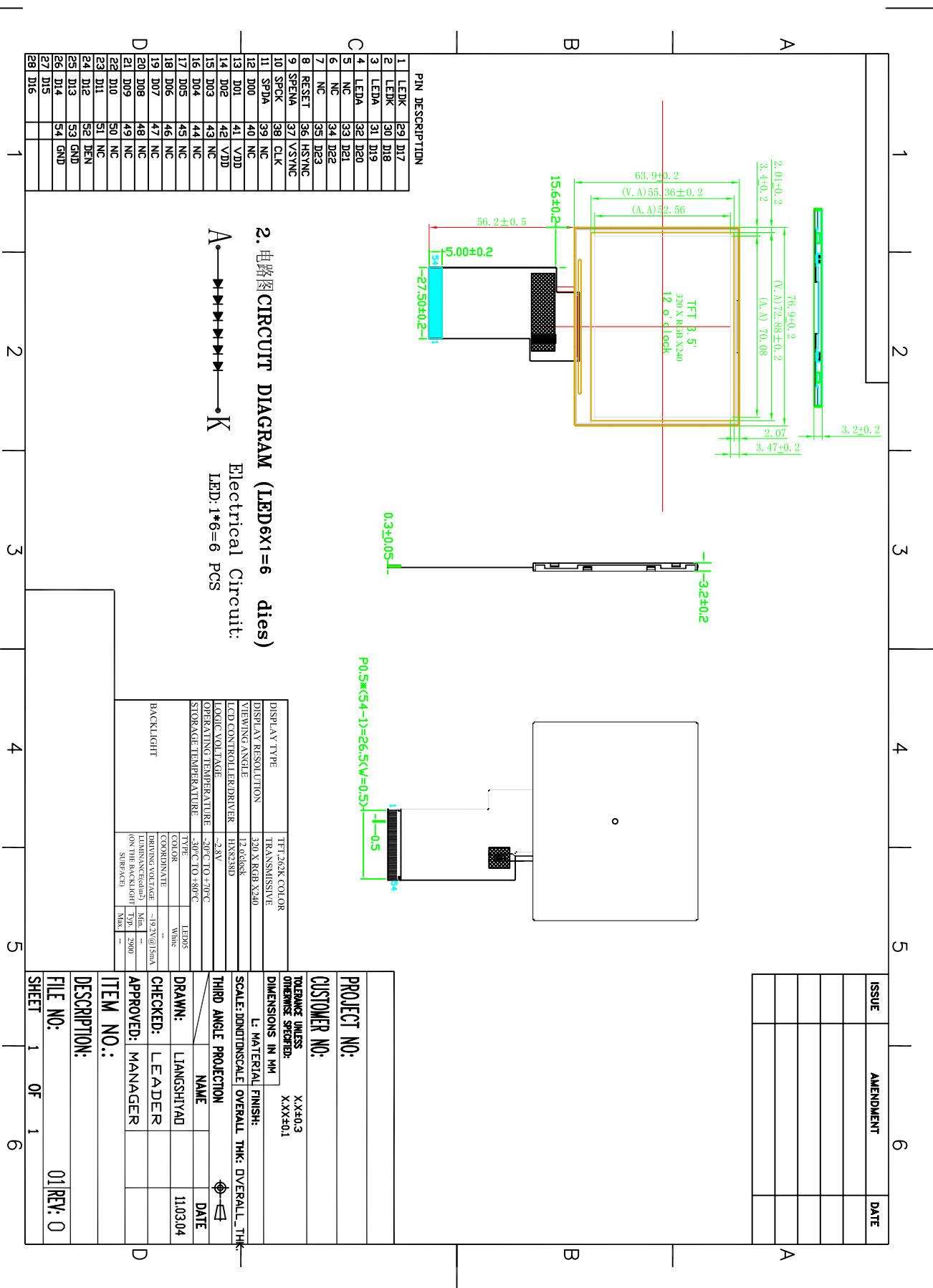




8 MECHANICAL DRAWING



PIN DESCRIPTION

1	LEDK	29	D17
2	LEDK	30	D18
3	LEDA	31	D19
4	LEDA	32	D20
5	NC	33	D21
6	NC	34	D22
7	NC	35	D23
8	RESET	36	HSTNC
9	SPEMA	37	VSTNC
10	SPCK	38	CLK
11	SPDA	39	NC
12	D00	40	NC
13	D01	41	VDD
14	D02	42	VDD
15	D03	43	NC
16	D04	44	NC
17	D05	45	NC
18	D06	46	NC
19	D07	47	NC
20	D08	48	NC
21	D09	49	NC
22	D10	50	NC
23	D11	51	NC
24	D12	52	DEN
25	D13	53	GND
26	D14	54	GND
27	D15		
28	D16		

2. 电路图 CIRCUIT DIAGRAM (LEDx1=6 dies)
Electrical Circuit:
LED:1*6=6 PCS

DISP.LAY TYPE	TFT,262K COLOR	
DISP.LAY RESOLUTION	TRANSMISSIVE 320 X RGB X340	
VIEWING ANGLE	12.0clock	
LED CONTROL DRIVER	HX828D	
LOGIC VOLTAGE	-2.5V	
OPERATING TEMPERATURE	-20°C TO +70°C	
STORAGE TEMPERATURE	-30°C TO +80°C	
BACKLIGHT	TYPE COLOR COORDINATE DRIVING VOLTAGE (MINIMUM REQUIRED) Type Max	LEDs White -- ~19.2V@15mA -- 2000

PROJECT NO:	
CUSTOMER NO:	
TOLERANCE UNLESS OTHERWISE SPECIFIED:	XX±0.3 XXXX±0.1
DIMENSIONS IN MM	
L: MATERIAL FINISH:	
SCALE: DIMENSION SCALE OVERALL THK: OVERALL_THK	
THIRD ANGLE PROJECTION	
DRAWN: LANGSHIYAD	DATE 11.03.04
CHECKED: LEADER	
APPROVED: MANAGER	
ITEM NO.:	
DESCRIPTION:	
FILE NO:	01 REV: 0
SHEET 1 OF 1	