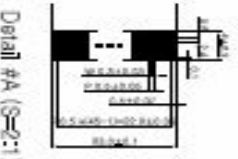
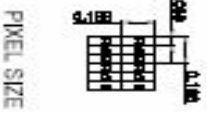
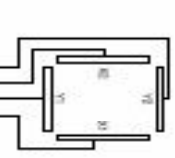
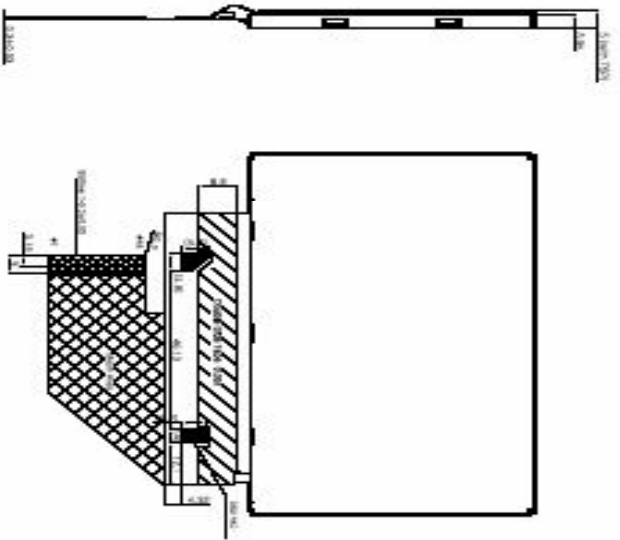
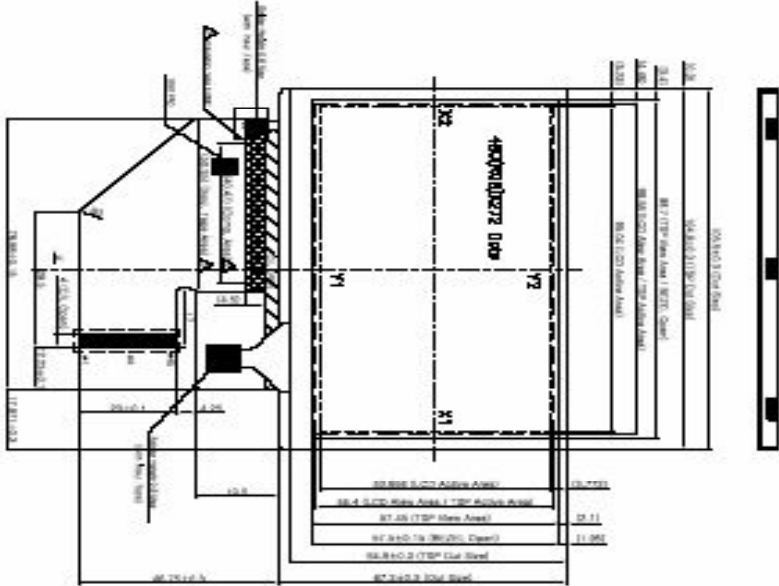


13. Dimensional Outline

NO.	SYMBOL	UNIT
1	LED_Arcosa	
2	LED_Arcosa	
3	LED_Arcosa	
4	LED_Cathode	
5	LED_Cathode	
6	X1_T1	
7	X1_T2	
8	X2_T1	
9	X2_T2	
10	Y1	
11	Y2	
12	Z1	
13	Z2	
14	Z3	
15	Z4	
16	Z5	
17	Z6	
18	Z7	
19	Z8	
20	Z9	
21	Z10	
22	Z11	
23	Z12	
24	Z13	
25	Z14	
26	Z15	
27	Z16	
28	Z17	
29	Z18	
30	Z19	
31	Z20	
32	Z21	
33	Z22	
34	Z23	
35	Z24	
36	Z25	
37	Z26	
38	Z27	
39	Z28	
40	Z29	
41	Z30	
42	Z31	
43	Z32	
44	Z33	
45	Z34	

- Note
- LCD Spec : 4.3" TFT
 - Resolution : 480 * RGB * 272
 - Pixel size : 0.198(H) * 0.198(V)
 - Viewing Direction : 6 C'clock
 - Drive IC : Source : HY8272A_2aa / Sink : X9855A_1aa
 - Back Light Units : LED 7 Chips / 20 mA
 - TSP : Δ GH98 / 0.95T (0.7T GH98)
 - Operating temp. : -20 °C ~ 50 °C
 - Storage temp. : -30 °C ~ 70 °C



TSP CIRCUIT DIAGRAM

GENERAL TOLERANCE			
SIZE	LEVEL 1	LEVEL 2	LEVEL 3
0.1X~4	±0.1	±0.1	±0.2
4.0X~15	±0.2	±0.15	±0.3
15.0X~64	±0.3	±0.25	±0.5
64.0X~250	±0.5	±0.4	±0.8

NO.	DATE	REV.	DESCRIPTION OF REVISION	REASON
01	07/11/17		INITIAL DESIGN	
02	07/20/18		480P PANEL & 272P PANEL	

REV.	DATE	BY	CHK'D BY	APP'D BY	MODEL NAME	REASON
01	07/20/18	Y.L.SUN			VMS430HF02	

NO.	DATE	REV.	DESCRIPTION OF REVISION	REASON
01	07/20/18		INITIAL DESIGN	

NO.	DATE	REV.	DESCRIPTION OF REVISION	REASON
01	07/20/18		INITIAL DESIGN	

NO.	PART NAME	CODE NO.	SPECIFICATION	QTY	SPEC. NO.	REMARK
1	LOM-ASSY			1		

MODEL NO : VMS430HF02

REV. : 00

VODA TECH

DOC NO : VMS430HF02

PAGE : 23 / 24